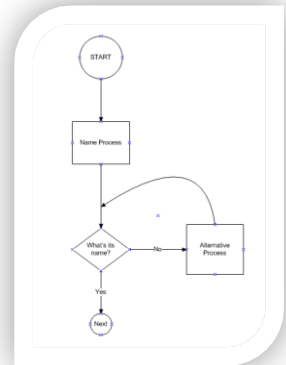


# The Enhanced Learning Plan

A learning efficiency analysis paradigm (aLEAP) describes how people learn. This plan adapts the model in order to optimize student academic performance. Refer to this guide to identify how closely your instruction matches how people learn. Instructions (sequences) are adapted from several learning research results known to improve student outcomes. The initial framework of questions is adapted from Terman and Merrill (1960). Sequencing and scaffolding models emerged from these principles of learning.

**Directions** Use this guide to review your lesson plan. Each plan may include multiple topics or principles. This guide may help you prioritize “take aways” from this lesson. Try to focus on one principle per lesson plan. Record one specific principle or topic. Correlate the topic to the state content standard and framework. Next complete each of the three *HELP* steps in order to optimize the potential for learning. Modify your original lesson plan so that your instruction addresses each of the *HELP* steps.



Topic: \_\_\_\_\_ Standard: \_\_\_\_\_

**Answers to the following questions are based on a learner's view of the lesson.**

## STEP 1 HELP (Heiny Enhanced Learning Plan\*)

- |   |           |
|---|-----------|
| 1.1 What do I have to do?               | 1.1 _____ |
| 1.2 How do I do it?                     | 1.2 _____ |
| 1.3 How do I know I learned it?         | 1.3 _____ |
| 1.4 How do I show I learned it?         | 1.4 _____ |
| 1.5 So what do I get when I learned it? | 1.5 _____ |

\*Provide the answers to the learner

## STEP 2 HELP (Heiny Enhanced Learning Process)

- |                         |           |
|-------------------------|-----------|
| 2.1 What's its name?    | 2.1 _____ |
| 2.2 What's it like?     | 2.2 _____ |
| 2.3 What's not like it? | 2.3 _____ |
| 2.4 What's missing?     | 2.4 _____ |
| 2.5 What comes next?    | 2.5 _____ |

\* Learning plan must include each component

## STEP 3 HELP (Heiny Evaluated Learning Performance)

- |                           |           |
|---------------------------|-----------|
| 3.1 Oral response         | 3.1 _____ |
| 3.2 Written text response | 3.2 _____ |
| 3.3 Drawing               | 3.3 _____ |
| 3.4 Learner demonstration | 3.4 _____ |
| 3.5 Multiple choice       | 3.5 _____ |

\* Record examples of each and use at least two in the lesson plan.

Instructor's reflection (How do I adjust the lesson for next time?):

---

---